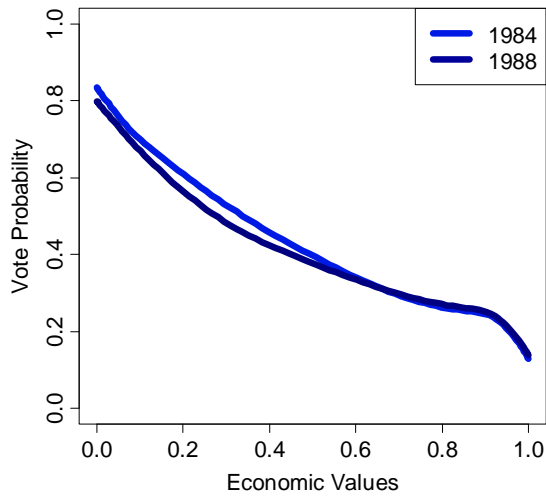
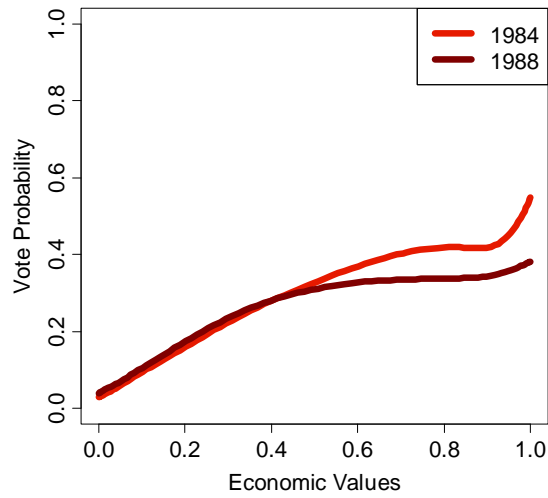


Figure 1
Evolution of Political Values and Voting Behavior:
The Nation as a Whole, 1984-1988

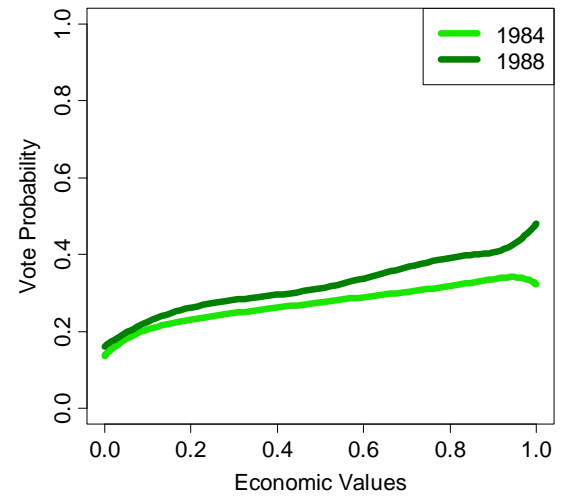
A. The Republican Vote & Economic Values



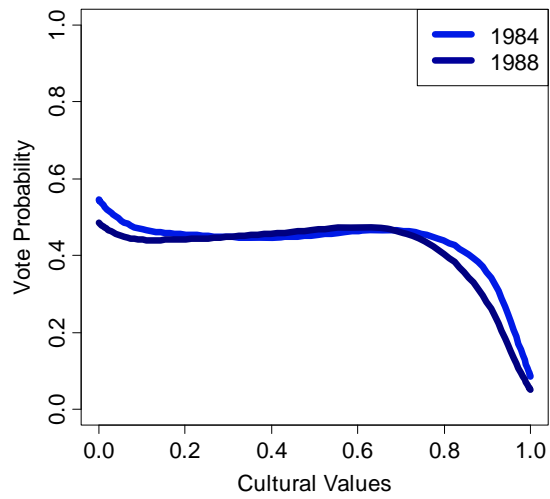
B. The Democratic Vote & Economic Values



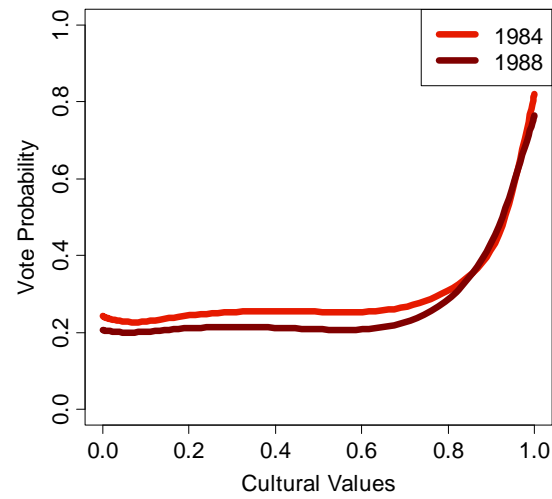
C. The Non-Vote & Economic Values



D. The Republican Vote & Cultural Values



E. The Democratic Vote & Cultural Values



F. The Non-Vote & Cultural Values

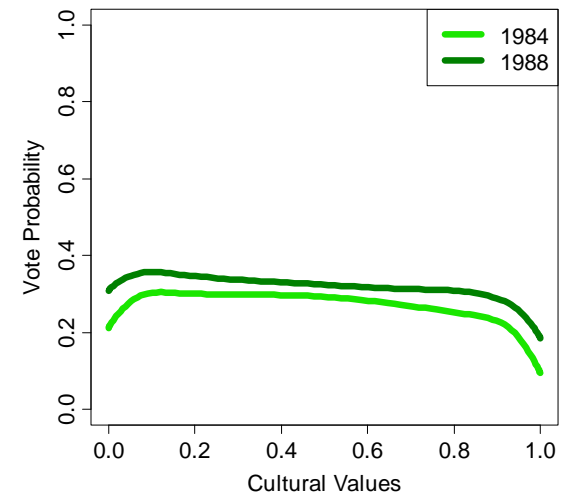
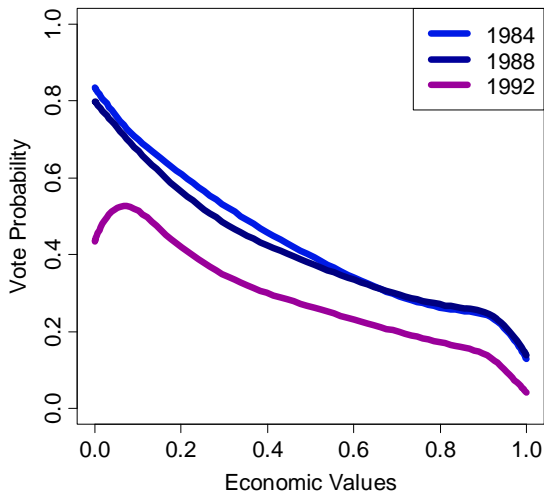
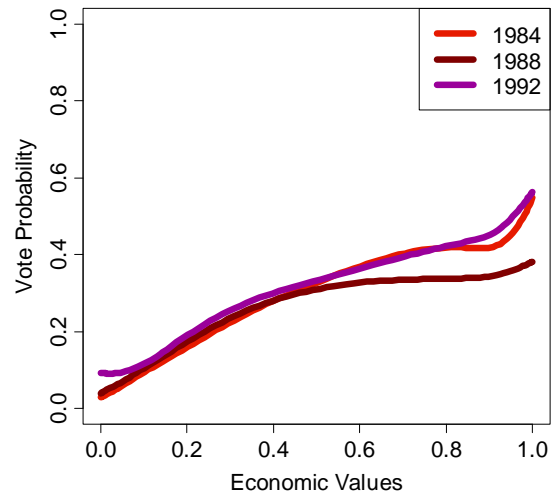


Figure 2
Evolution of Political Values and Voting Behavior:
The Nation as a Whole, 1984, 1988, 1992

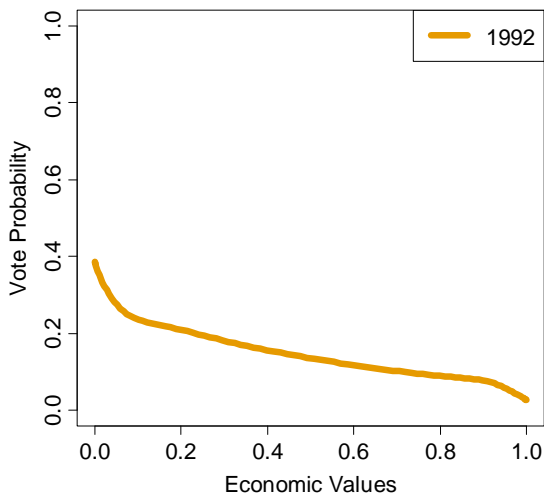
**A. The Republican Vote
& Economic Values**



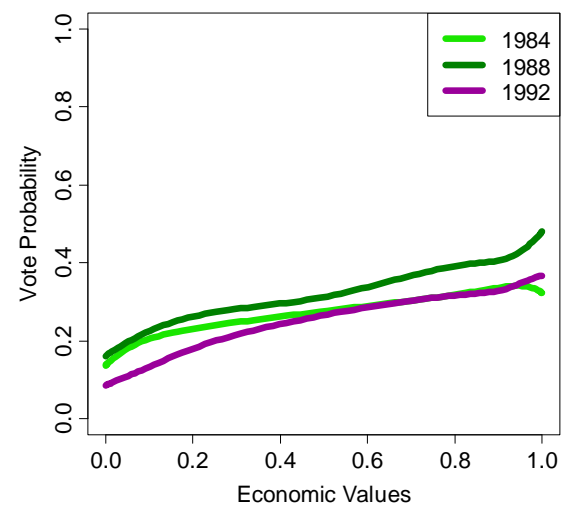
**B. The Democratic Vote
& the Economic Values**



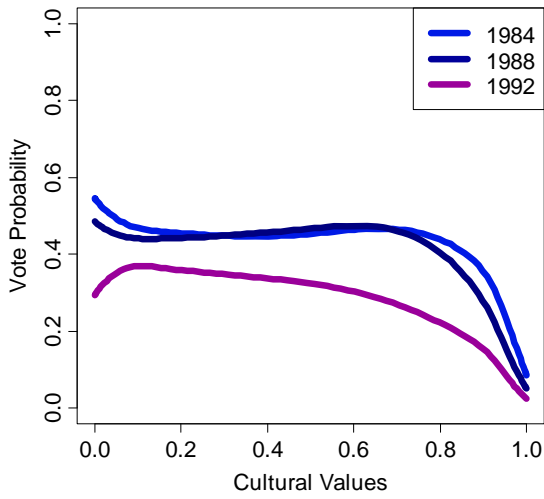
**C. The Perot Vote
& the Economic Values**



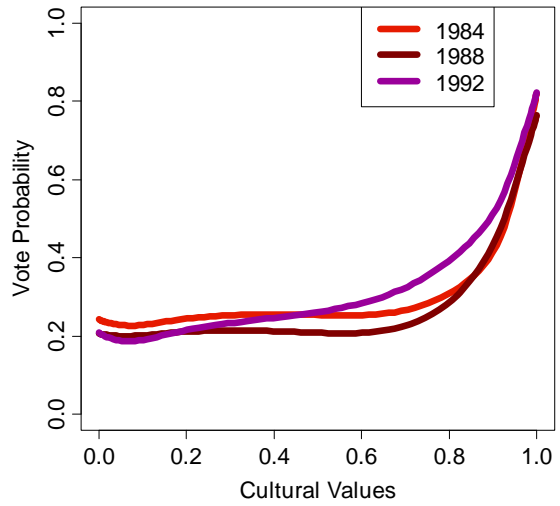
**D. The Non-Vote
& the Economic Values**



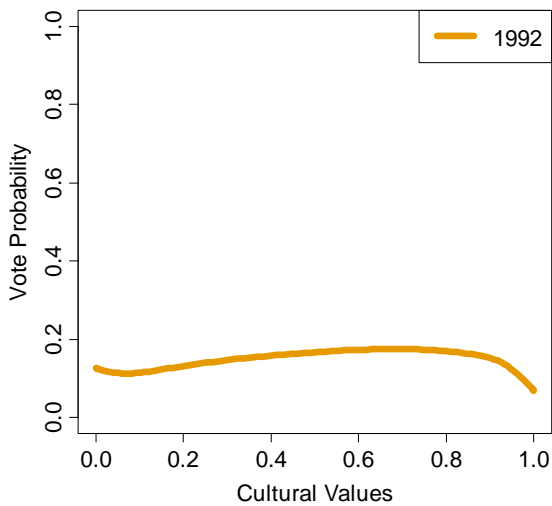
E. The Republican Vote & Cultural Values



F. The Democratic Vote & Cultural Values



G. Perot Vote & Cultural Values



H. The Non-Vote & Cultural Values

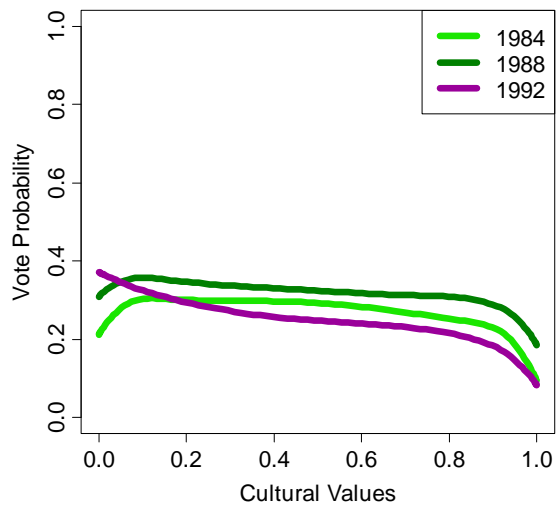
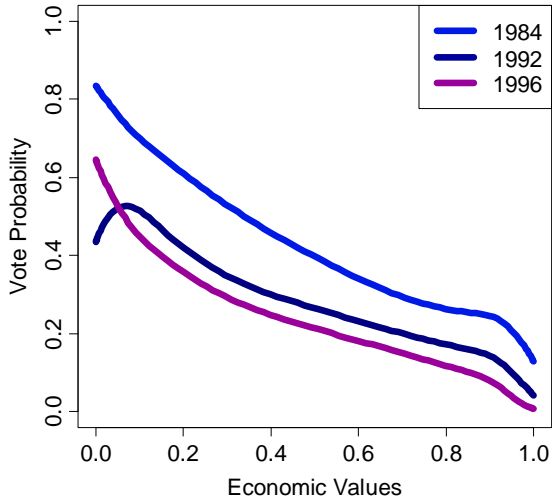
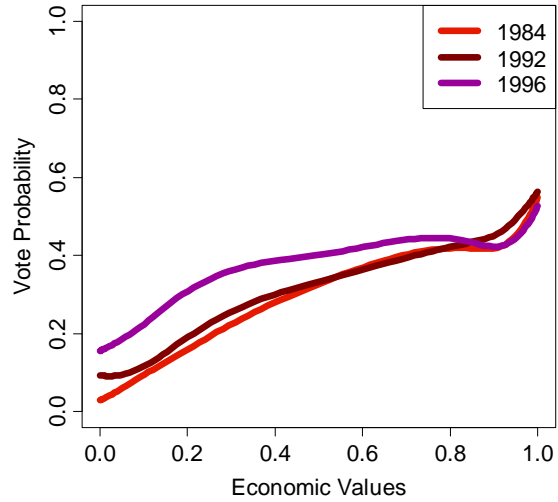


Figure 3
Evolution of Political Values and Voting Behavior:
The Nation as a Whole, 1984, 1992, 1996

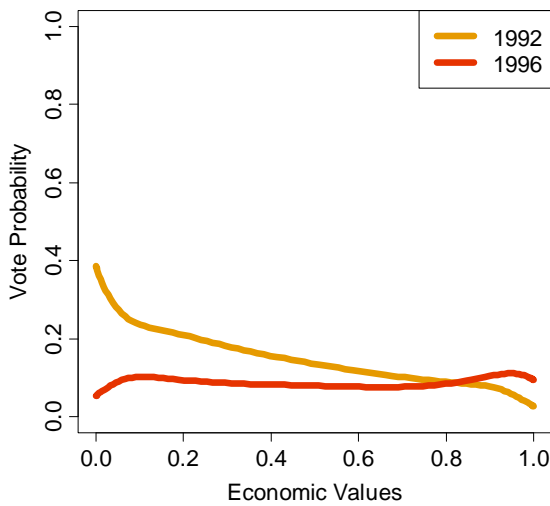
**A. The Republican Vote
& Economic Values**



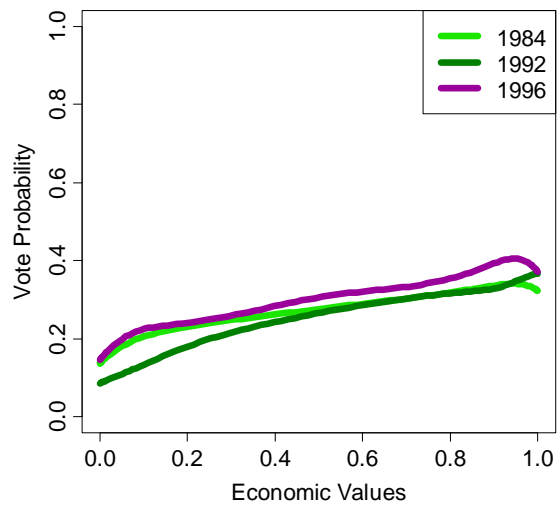
**B. The Democratic Vote
& the Economic Values**



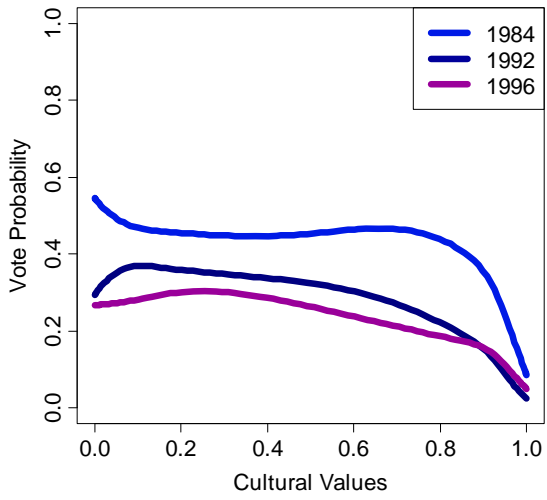
**C. The Perot Vote
& the Economic Values**



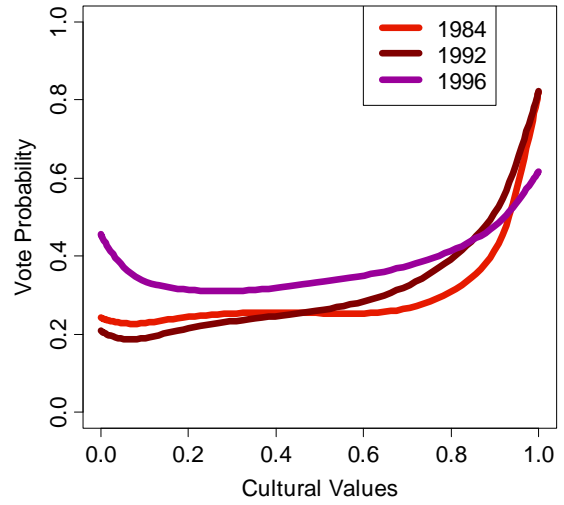
**D. The Non-Vote
& the Economic Values**



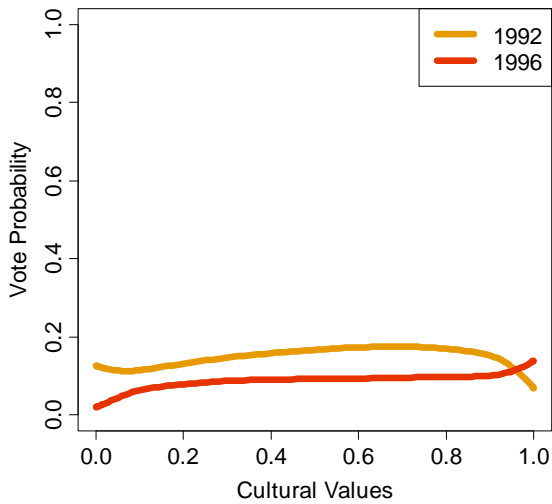
**E. The Republican Vote
& Cultural Values**



**F. The Democratic Vote
& Cultural Values**



G. Perot Vote



**H. The Non-Vote
& Cultural Values**

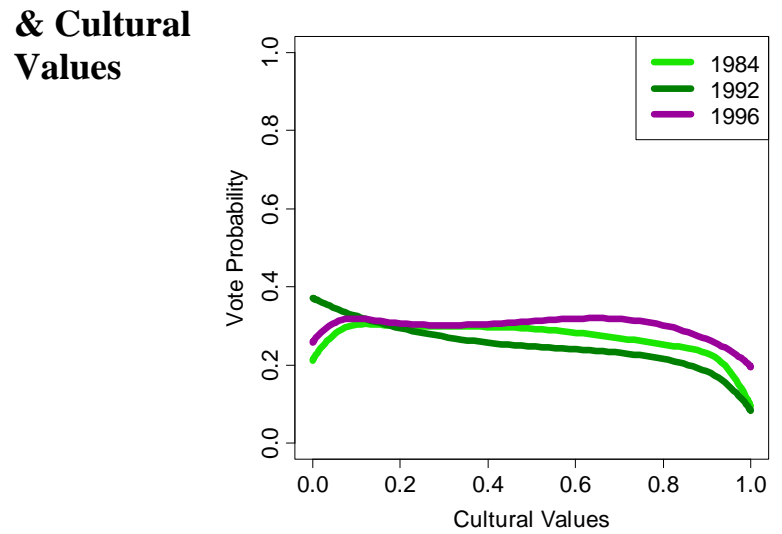
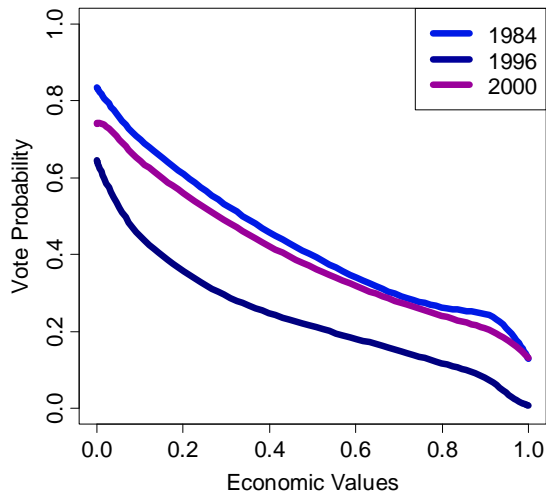
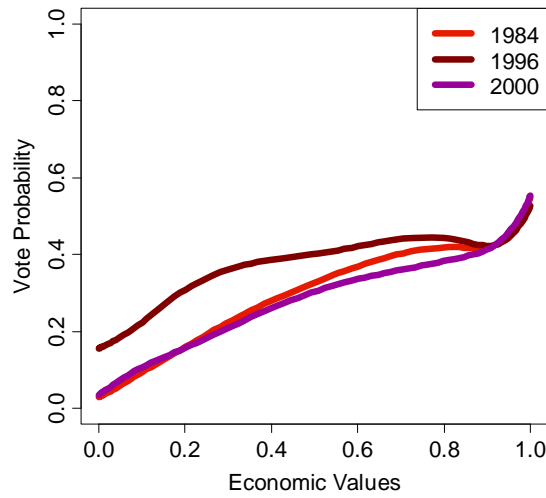


Figure 4
Evolution of Political Values and Voting Behavior:
The Nation as a Whole, 1984, 1996, 2000

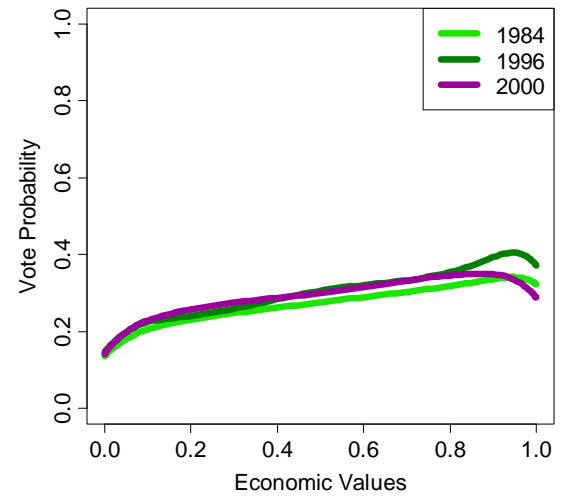
**A. The Republican Vote
& Economic Values**



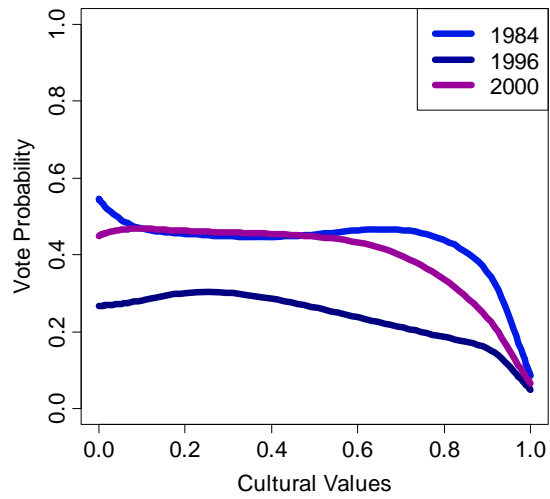
**B. The Democratic Vote
& Economic Values**



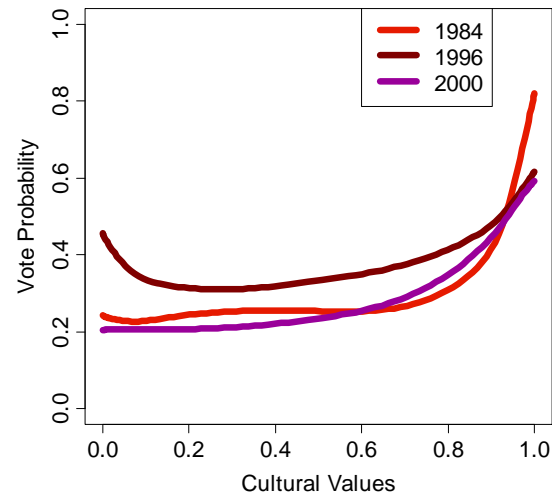
**C. The Non-Vote
& Economic Values**



D. The Republican Vote & Cultural Values



E. The Democratic Vote & Cultural Values



F. The Non-Vote & Cultural Values

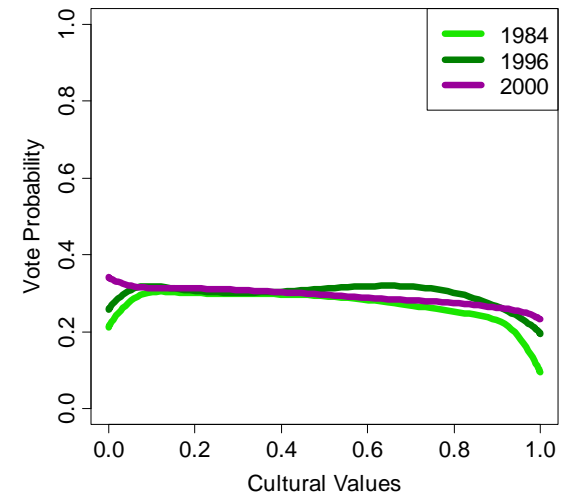
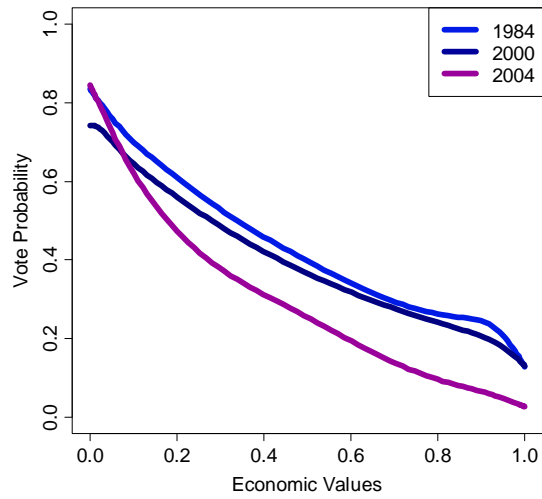
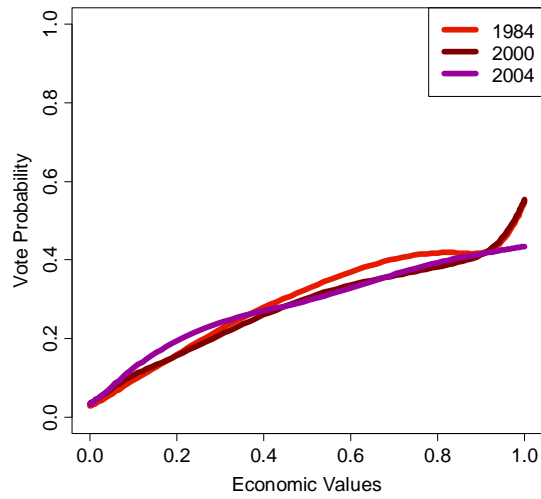


Figure 5
Evolution of Political Values and Voting Behavior:
The Nation as a Whole, 1984, 2000, 2004

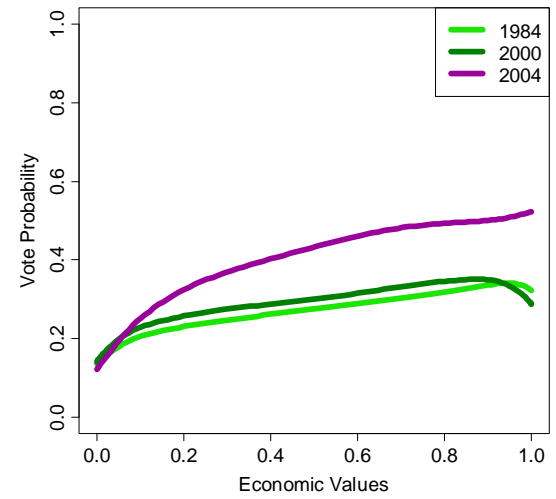
A. The Republican Vote & Economic Values



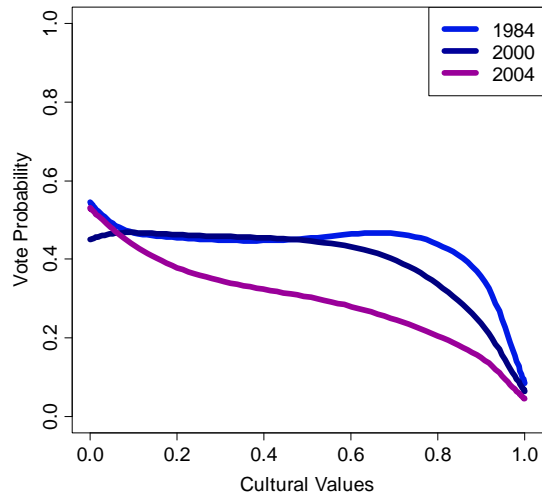
B. The Democratic Vote & Economic Values



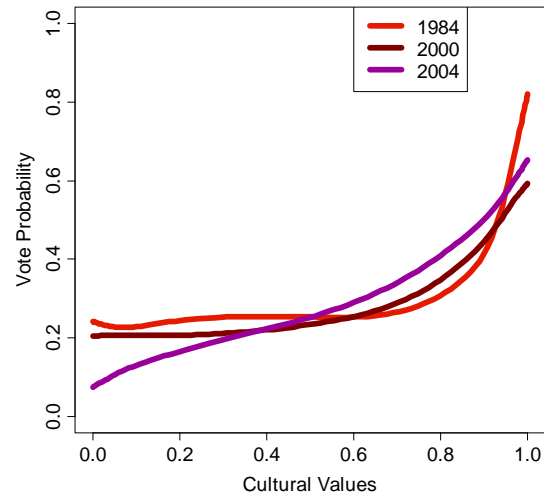
C. The Non-Vote & Economic Values



D. The Republican Vote & Cultural Values



E. The Democratic Vote & Cultural Values



F. The Non-Vote & Cultural Values

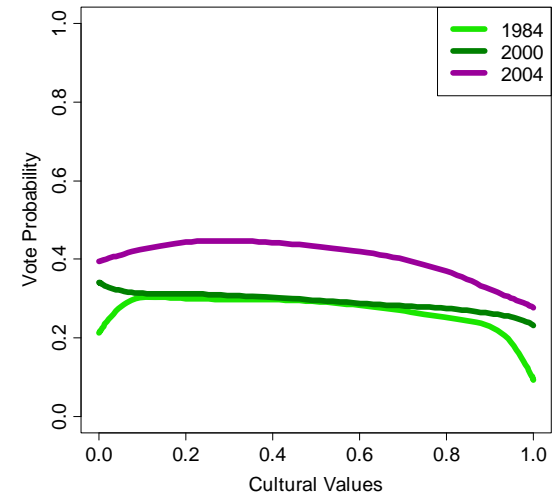


Figure 6
The Ideological Landscape and Voting Behavior:
The Nation as a Whole, 1988

**A. The Republican Vote
& the Ideological Landscape**

**B. The Democratic Vote
& the Ideological Landscape**

**C. The Non-Vote
& the Ideological Landscape**

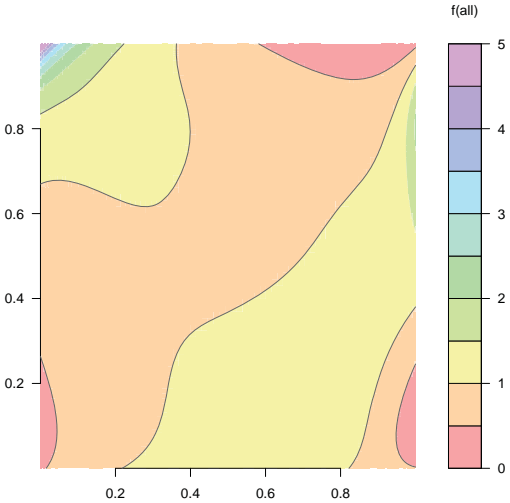
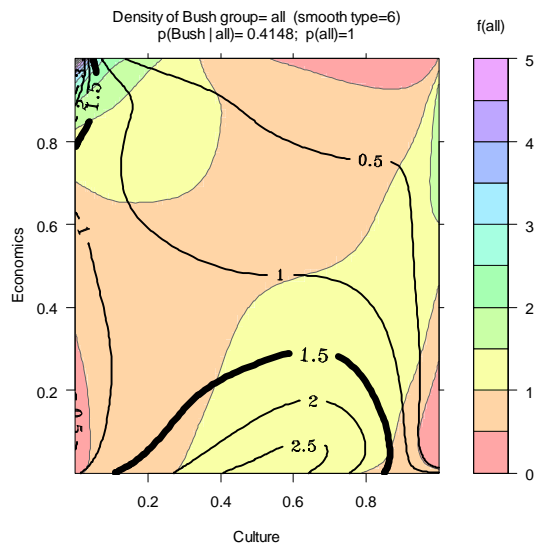
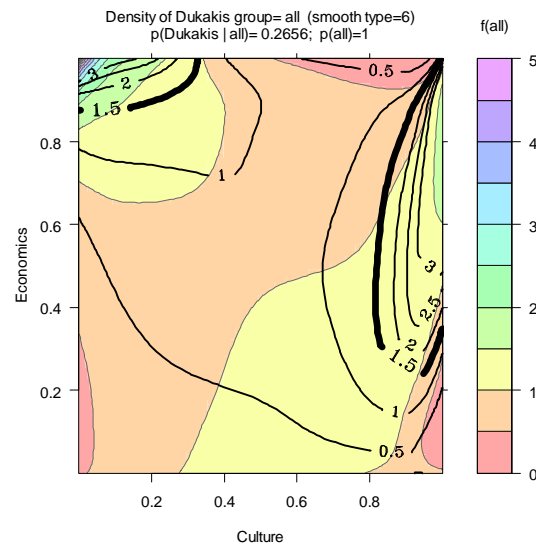


Figure 7
Ideological Density and Voting Behavior:
The Nation as a Whole, 1988

**A. The Republican Vote
& the Ideological Landscape**



**B. The Democratic Vote
& the Ideological Landscape**



**C. The Non-Vote
& the Ideological Landscape**

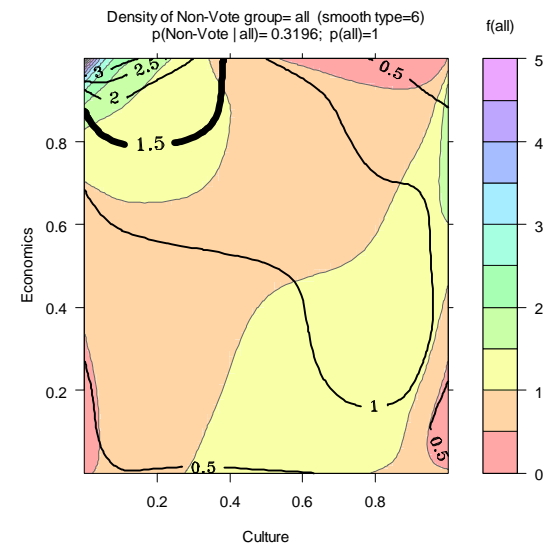
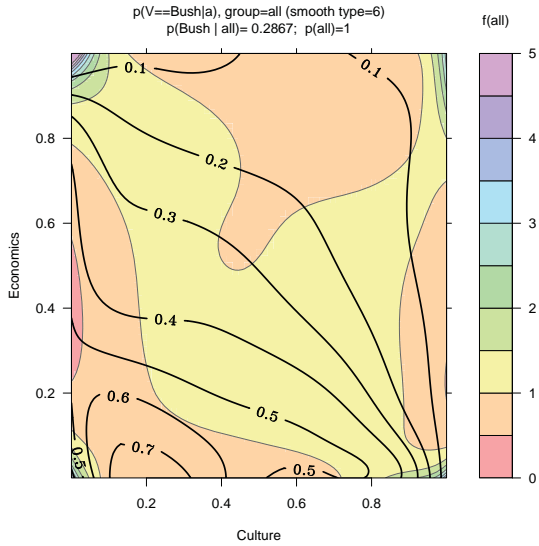


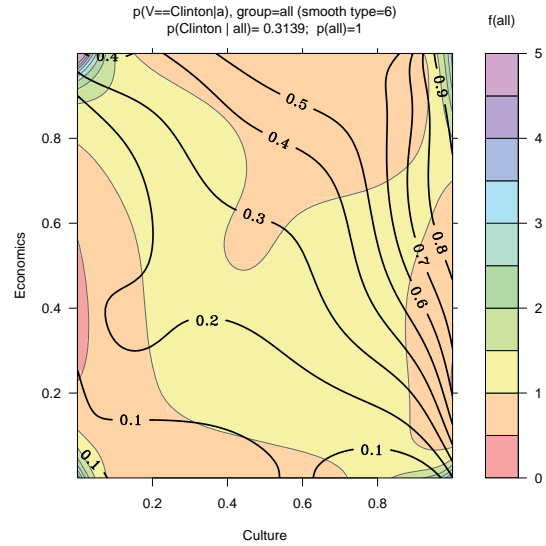
Figure 8

The Ideological Landscape and Voting Behavior: The Nation as a Whole, 1992

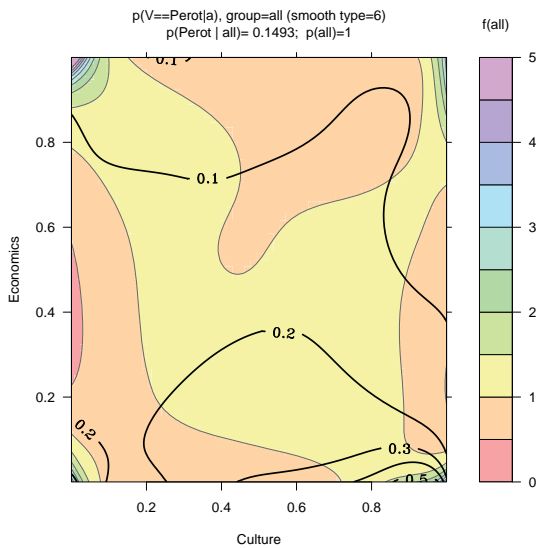
**A. The Republican Vote
& the Ideological Landscape**



**B. The Democratic Vote
& the Ideological Landscape**



**C. Perot Vote
& the Ideological Landscape**



**D. The Non-Vote
& the Ideological Landscape**

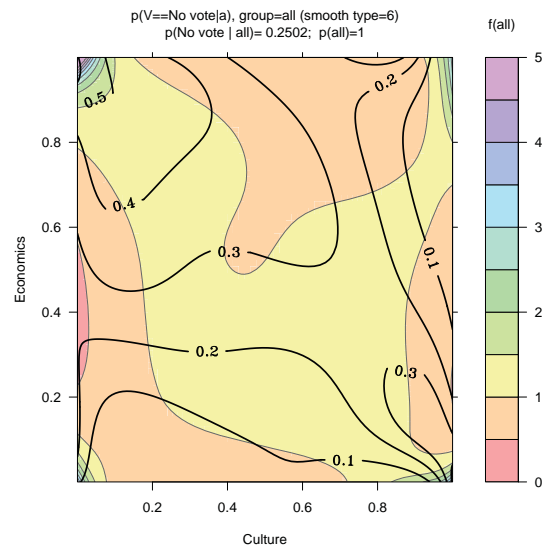
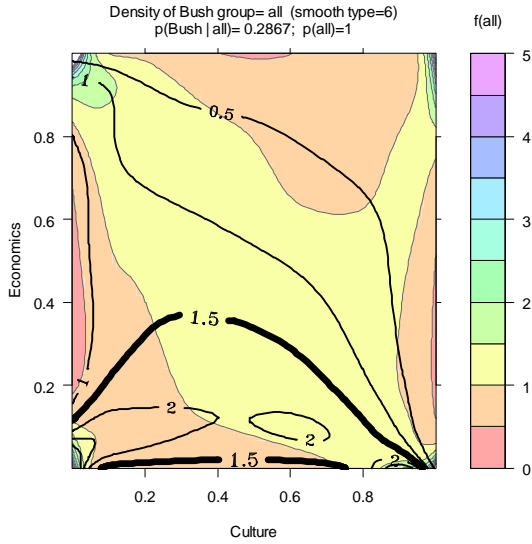


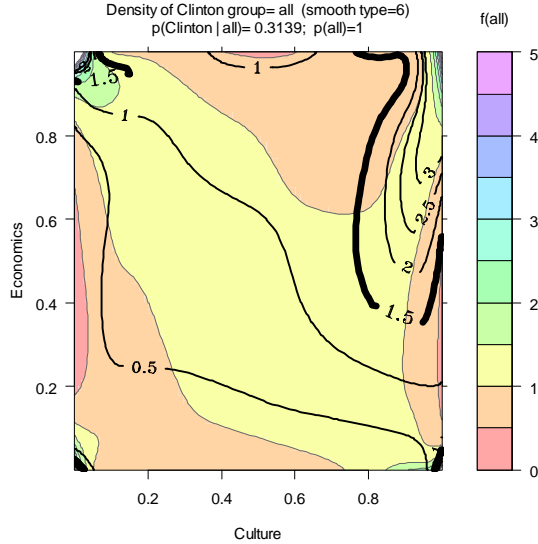
Figure 9

Ideological Density and Voting Behavior: The Nation as a Whole, 1992

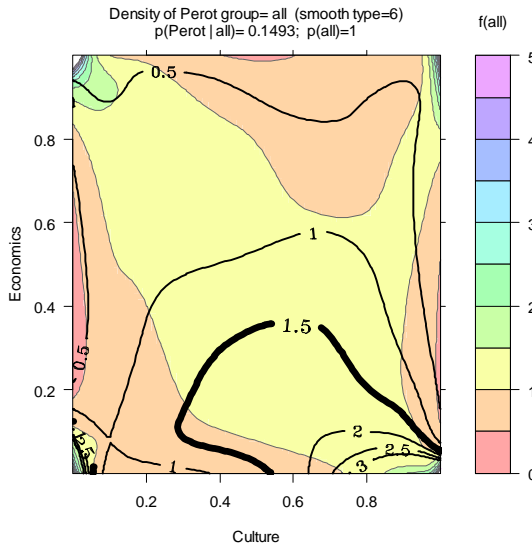
**A. The Republican Vote
& the Ideological Landscape**



**B. The Democratic Vote
& the Ideological Landscape**



**C. Perot Vote
& the Ideological Landscape**



**D. The Non-Vote
& the Ideological Landscape**

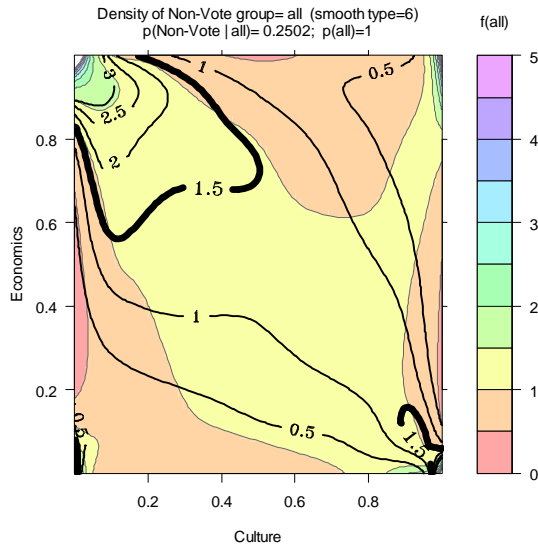
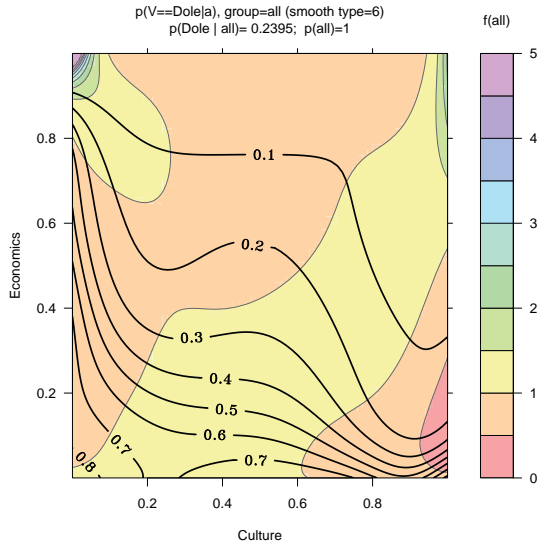


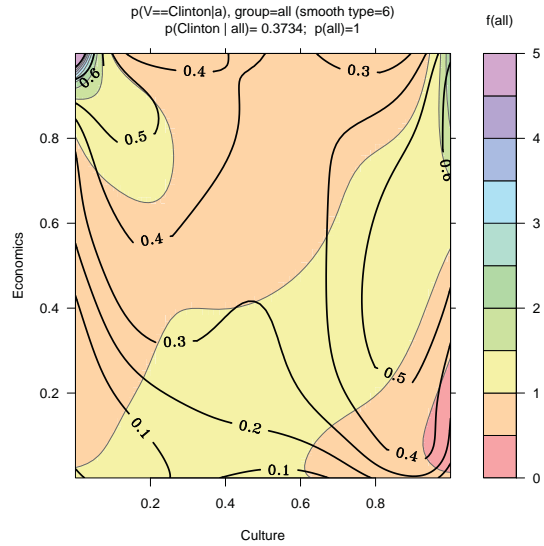
Figure 10

The Ideological Landscape and Voting Behavior: The Nation as a Whole, 1996

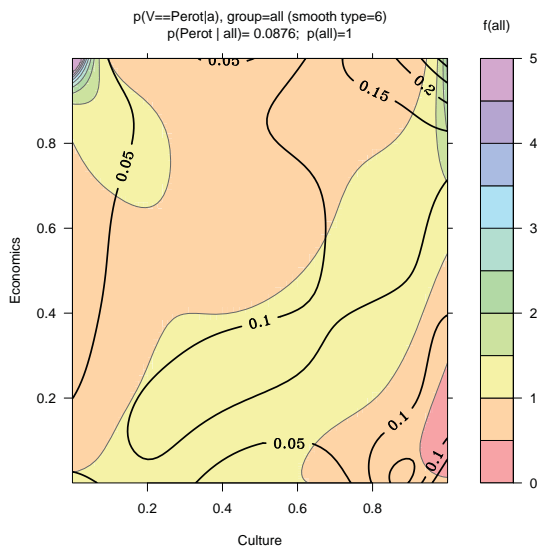
A. The Republican Vote & the Ideological Landscape



B. The Democratic Vote & the Ideological Landscape



C. Perot Vote & the Ideological Landscape



D. The Non-Vote & the Ideological Landscape

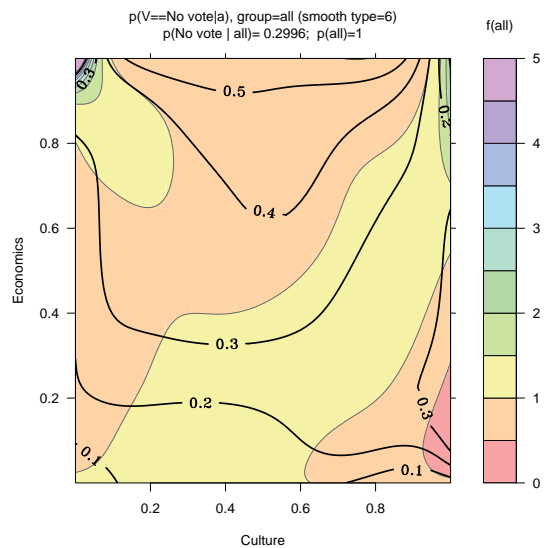
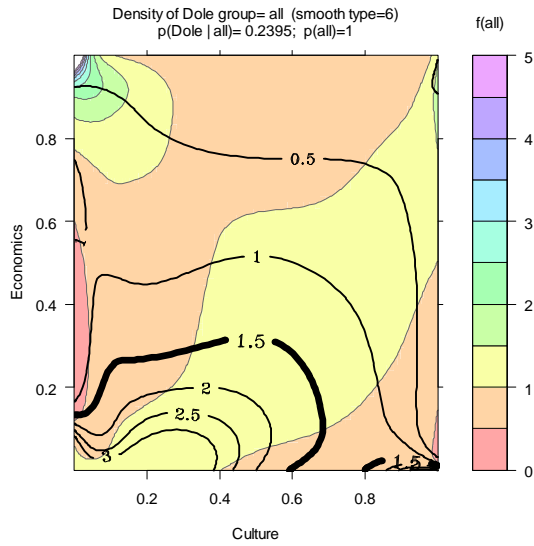


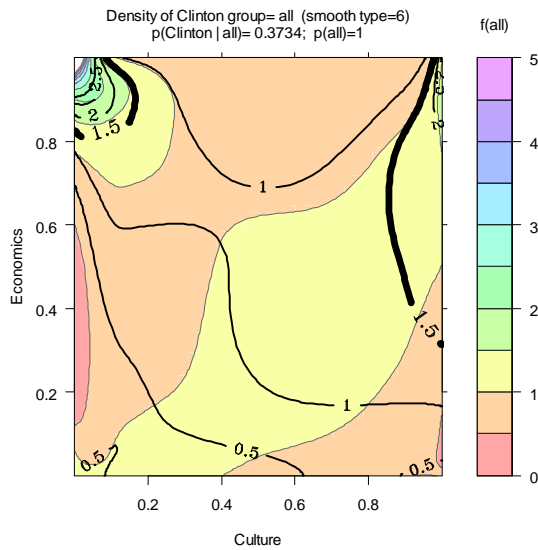
Figure 11

Ideological Density and Voting Behavior: The Nation as a Whole, 1996

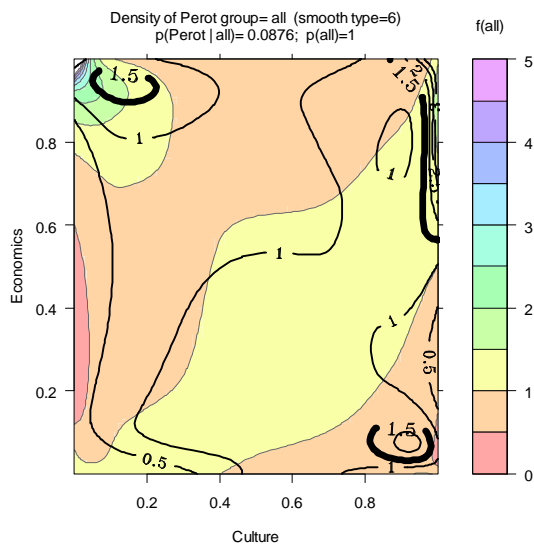
A. The Republican Vote & the Ideological Landscape



B. The Democratic Vote & the Ideological Landscape



C. Perot Vote & the Ideological Landscape



D. The Non-Vote & the Ideological Landscape

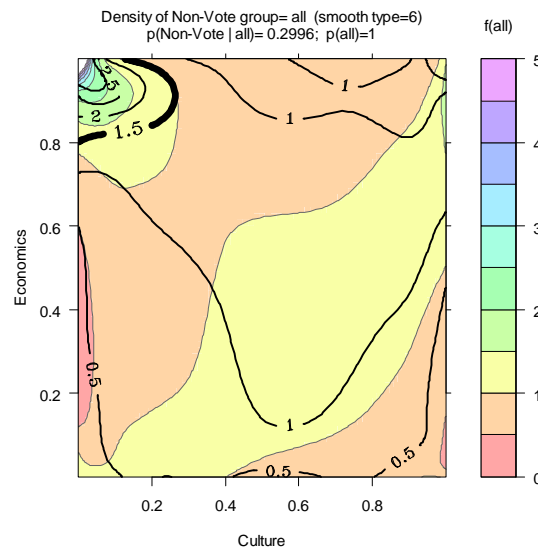
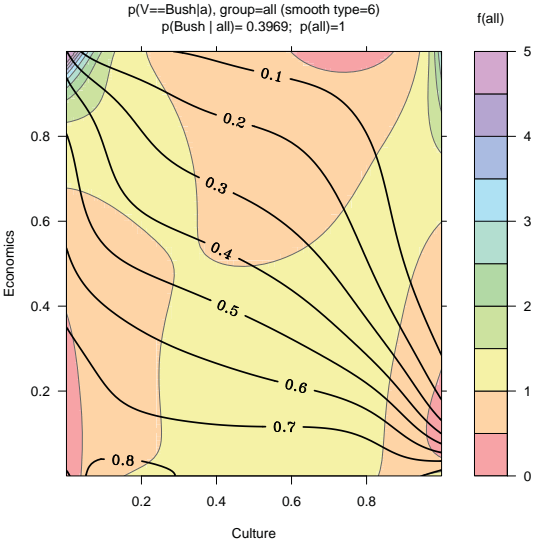
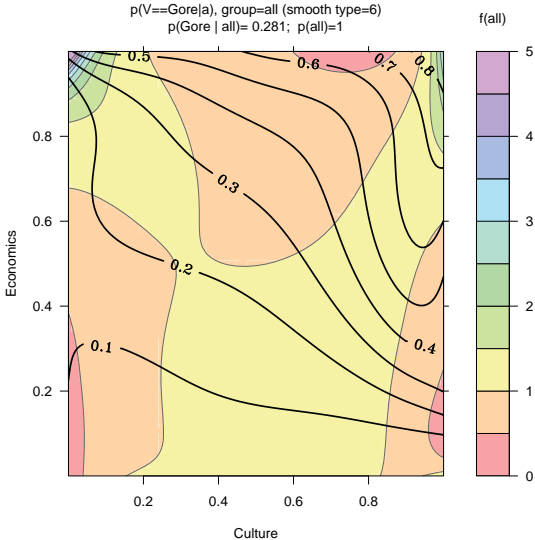


Figure 12
The Ideological Landscape and Voting Behavior:
The Nation as a Whole, 2000

A. The Republican Vote & the Ideological Landscape



B. The Democratic Vote & the Ideological Landscape



C. The Non-Vote & the Ideological Landscape

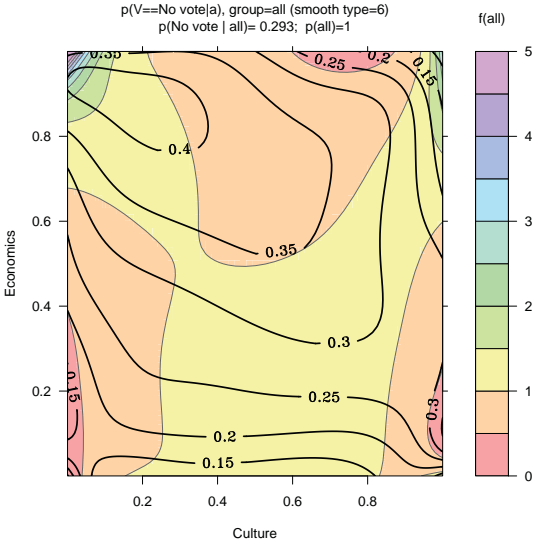
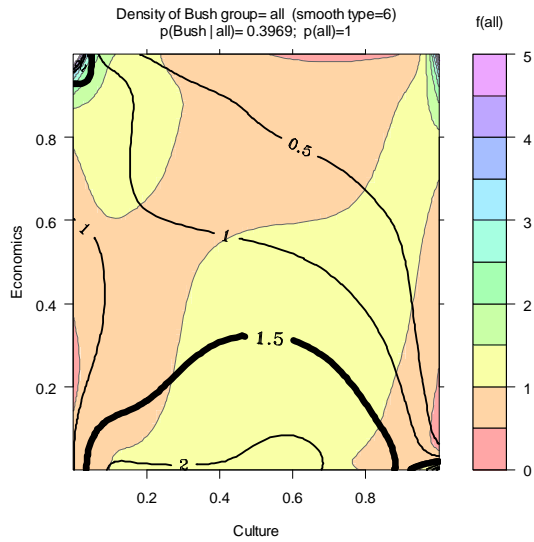
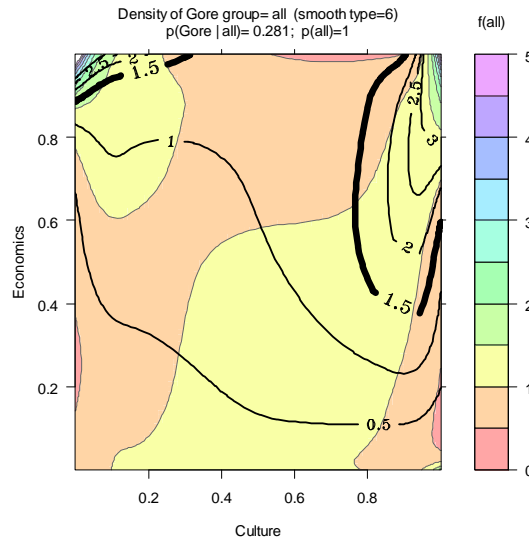


Figure 13
Ideological Density and Voting Behavior:
The Nation as a Whole, 2000

A. The Republican Vote & the Ideological Landscape



B. The Democratic Vote & the Ideological Landscape



C. The Non-Vote & the Ideological Landscape

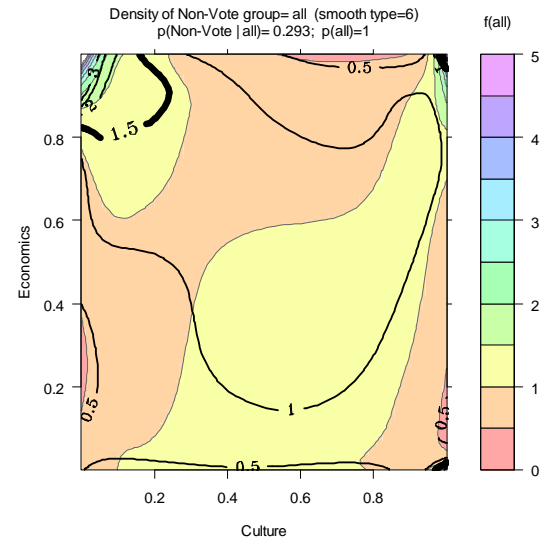
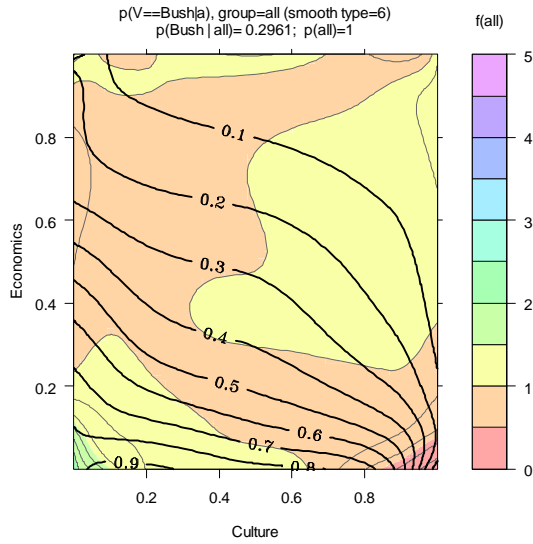
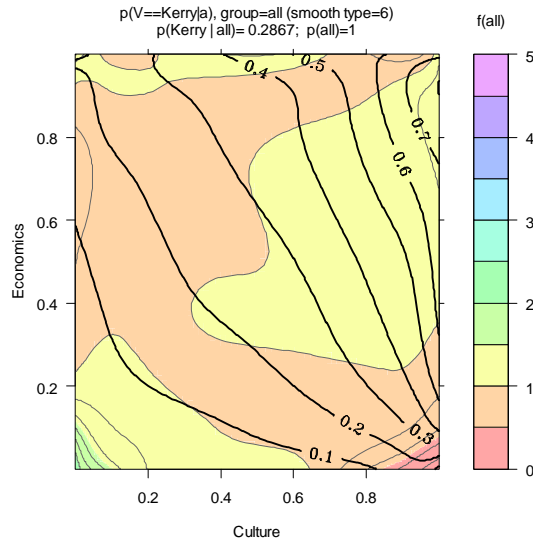


Figure 14
The Ideological Landscape and Voting Behavior:
The Nation as a Whole, 2004

A. The Republican Vote & the Ideological Landscape



B. The Democratic Vote & the Ideological Landscape



C. The Non-Vote & the Ideological Landscape

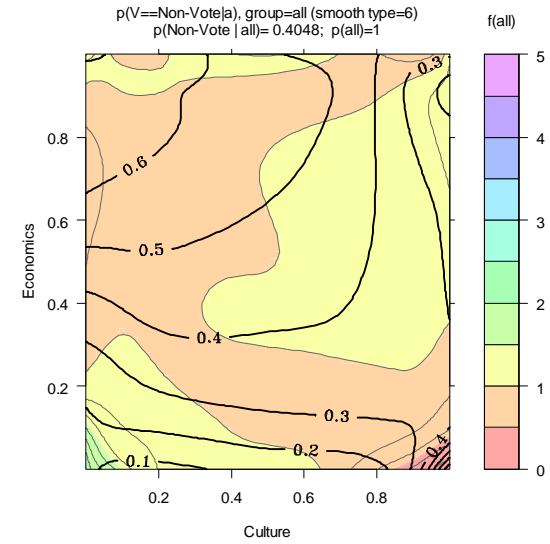


Figure 15
Ideological Density and Voting Behavior:
The Nation as a Whole, 2004

**A. The Republican Vote
& the Ideological Landscape**

**B. The Democratic Vote
& the Ideological Landscape**

**C. The Non-Vote
& the Ideological Landscape**

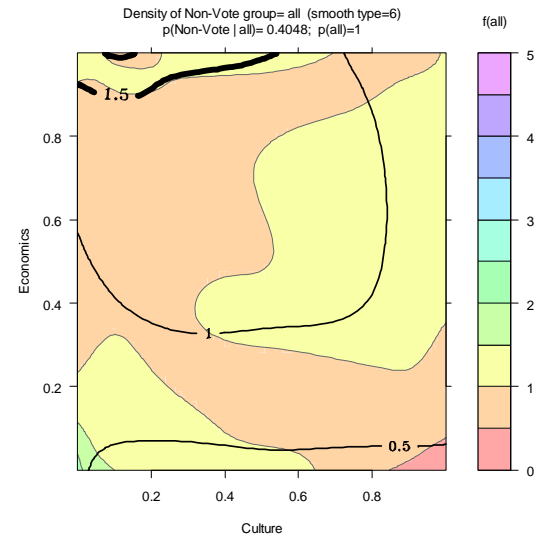
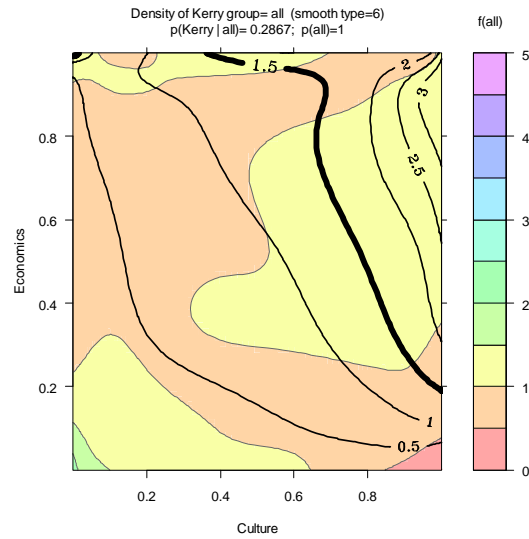
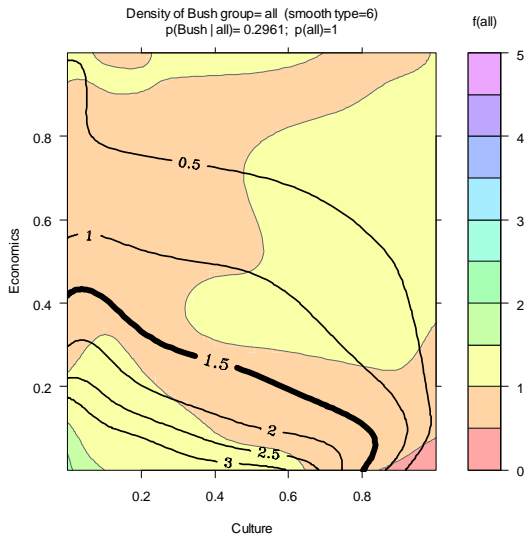
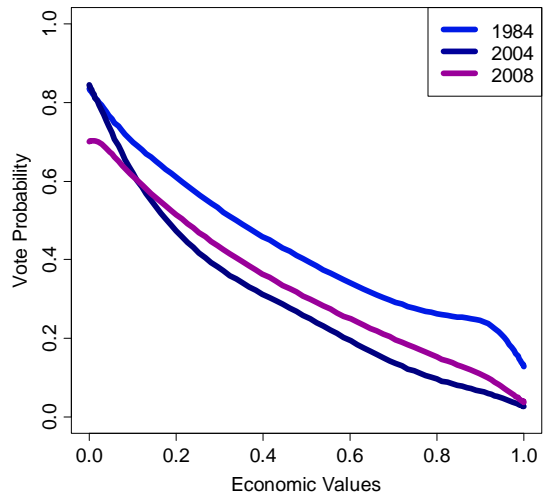
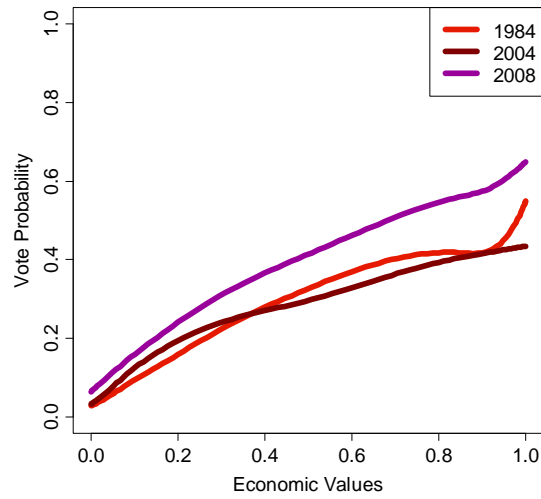


Figure 16
Evolution of Political Values and Voting Behavior:
The Nation as a Whole, 1984, 2004, 2008

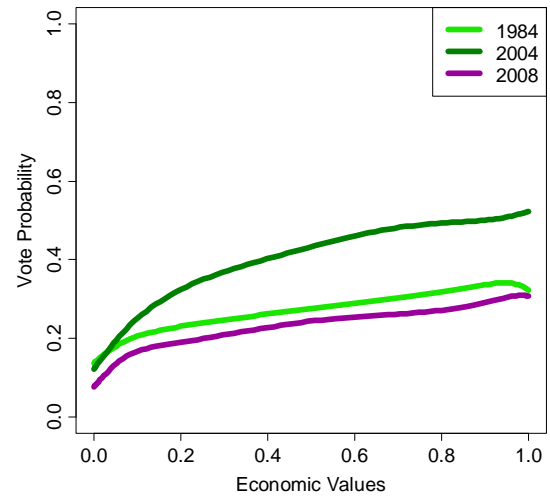
**A. The Republican Vote
& Economic Values**



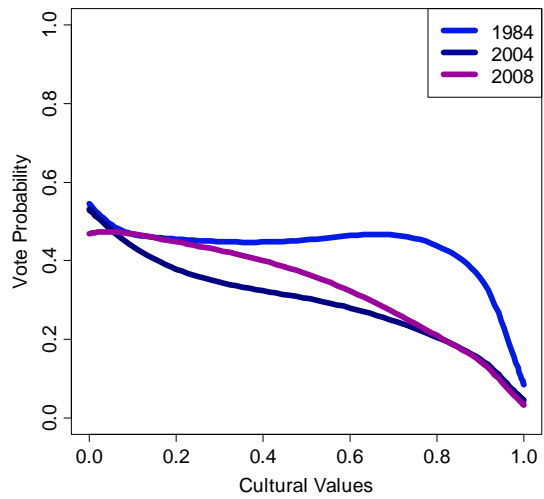
**B. The Democratic Vote
& Economic Values**



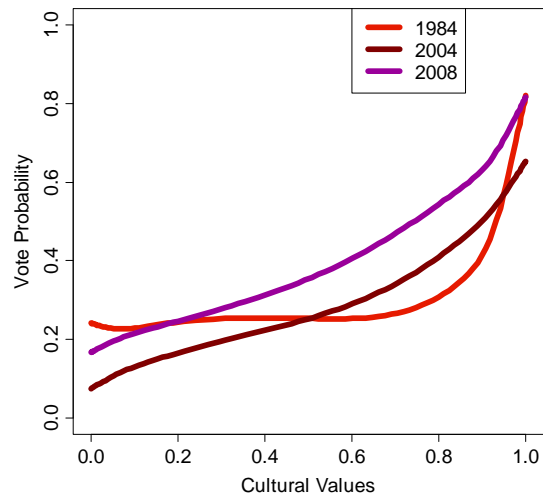
**C. The Non-Vote
& Economic Values**



D. The Republican Vote & Cultural Values



E. The Democratic Vote & Cultural Values



F. The Non-Vote & Cultural Values

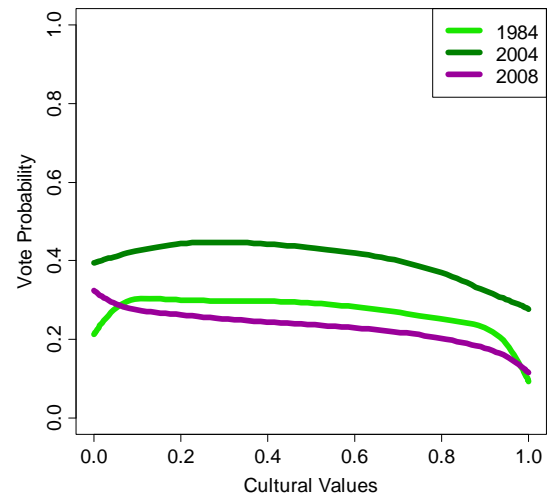
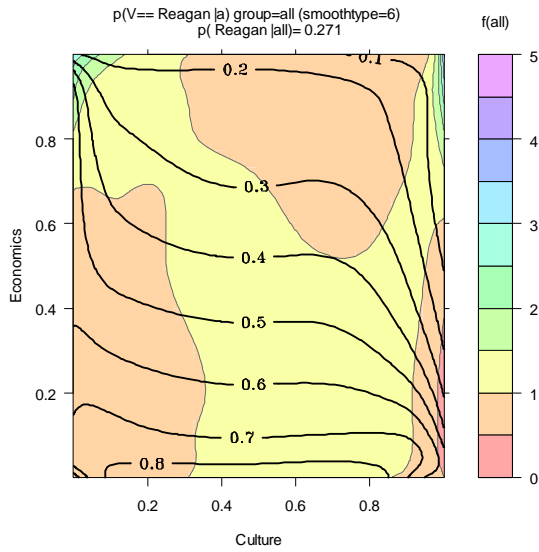


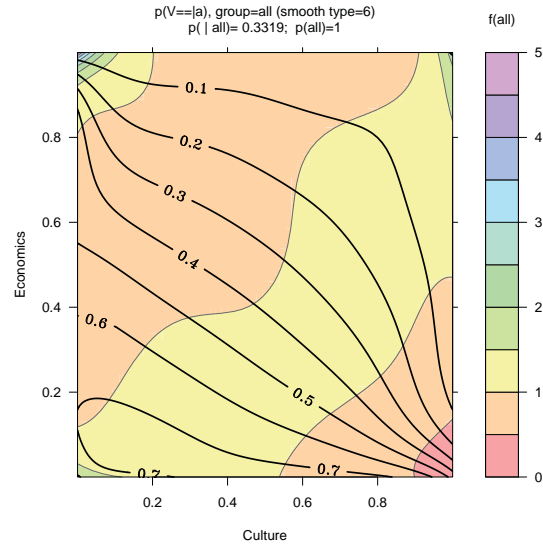
Figure 17

The Ideological Landscape and Voting Behavior: The Nation as a Whole, 1984, 2008

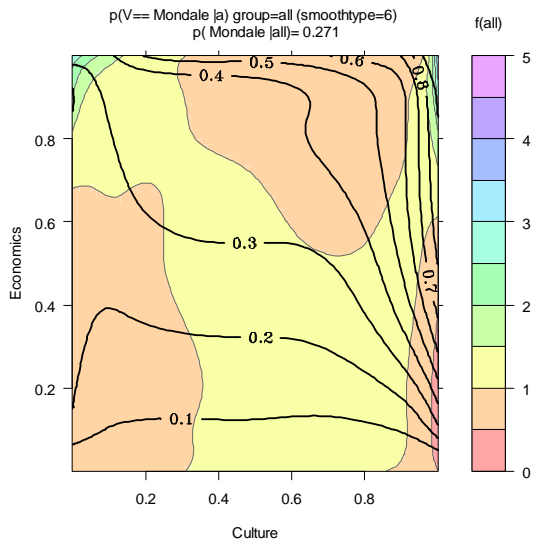
A. The Republican Vote & the Ideological Landscape, 1984



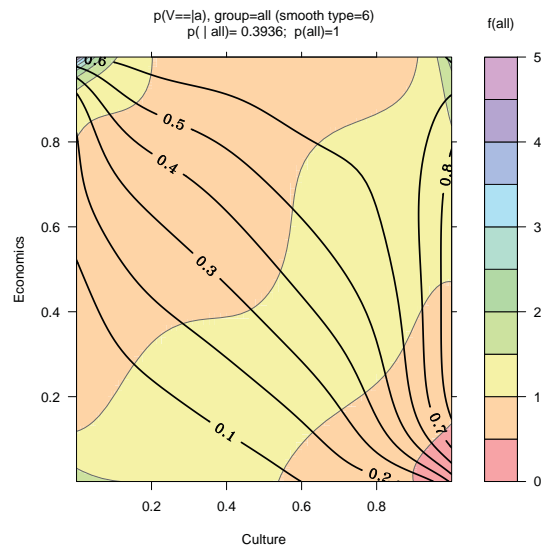
B. The Republican Vote & the Ideological Landscape, 2008



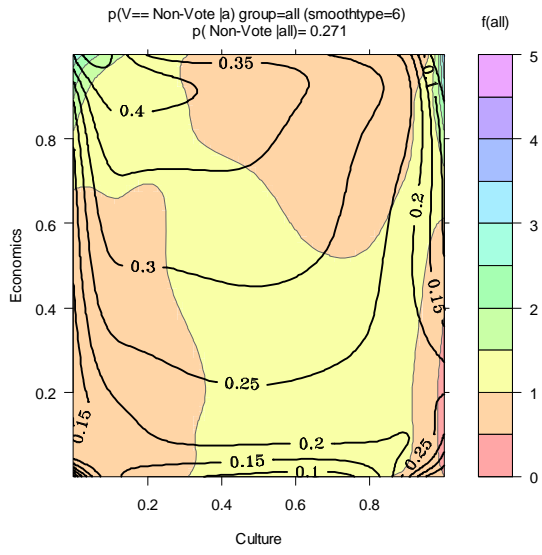
C. The Democratic Vote & the Ideological Landscape, 1984



D. The Democratic Vote & the Ideological Landscape, 2008



E. The Non Vote & the Ideological Landscape, 1984



F. The Non Vote & the Ideological Landscape, 2008

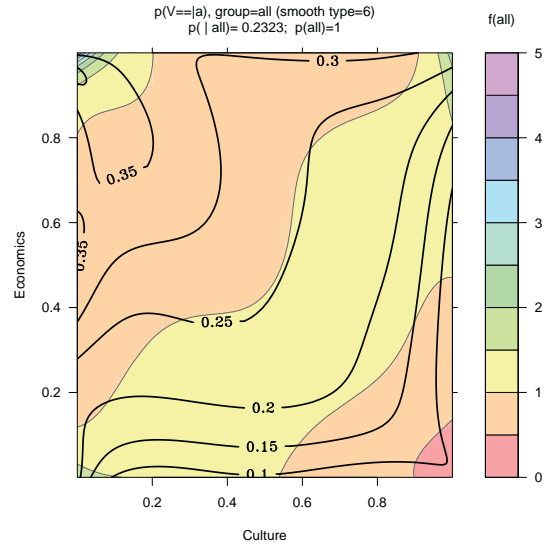
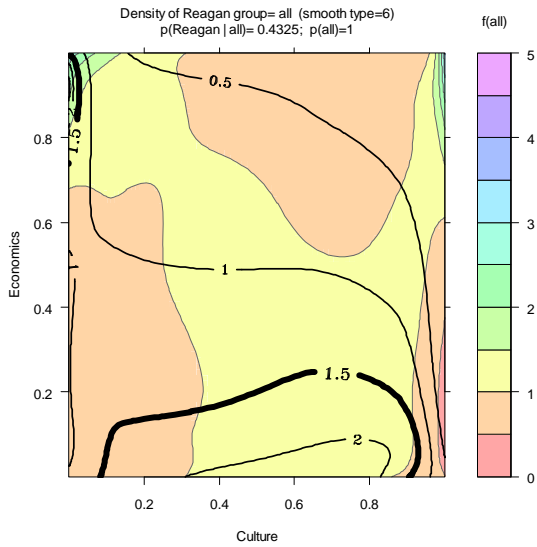


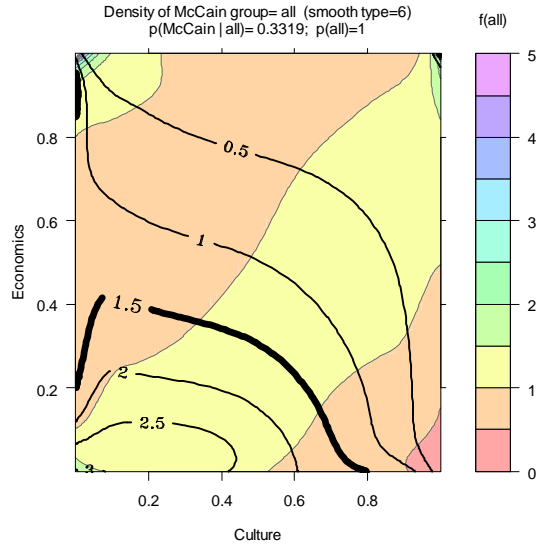
Figure 18

Ideological Density and Voting Behavior: The Nation as a Whole, 1984, 2008

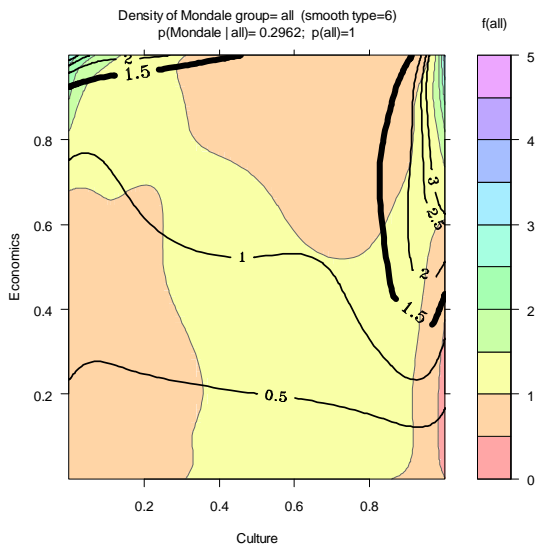
A. The Republican Vote & the Ideological Landscape, 1984



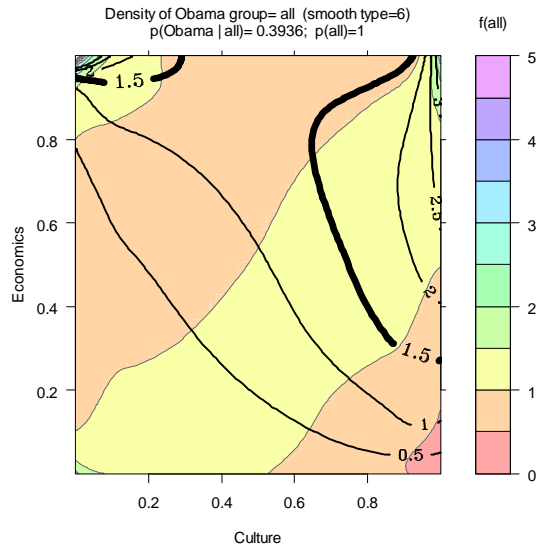
B. The Republican Vote & the Ideological Landscape, 2008



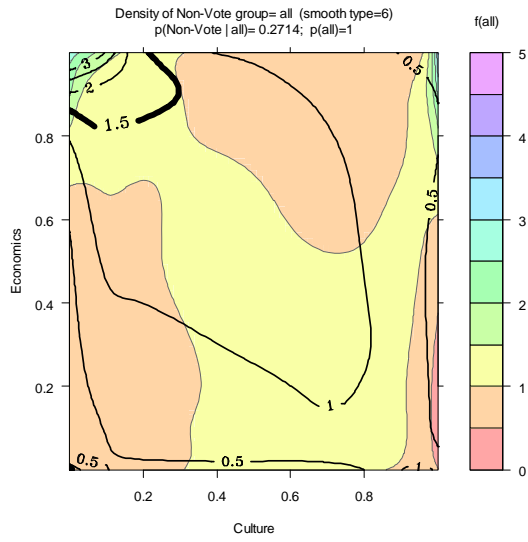
C. The Democratic Vote & the Ideological Landscape, 1984



D. The Democratic Vote & the Ideological Landscape, 2008



E. The Non Vote & the Ideological Landscape, 1984



F. The Non Vote & the Ideological Landscape, 2008

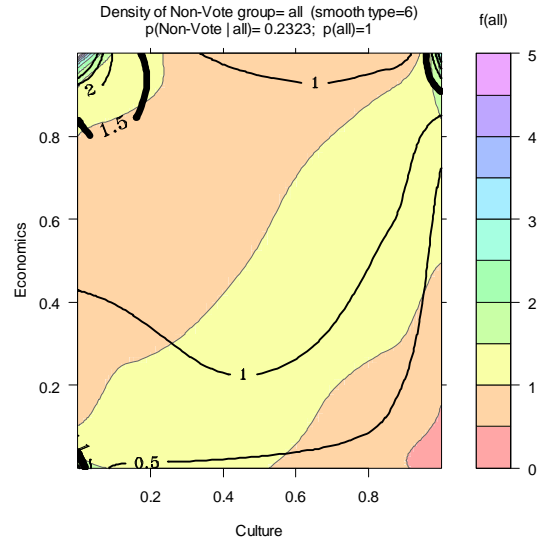


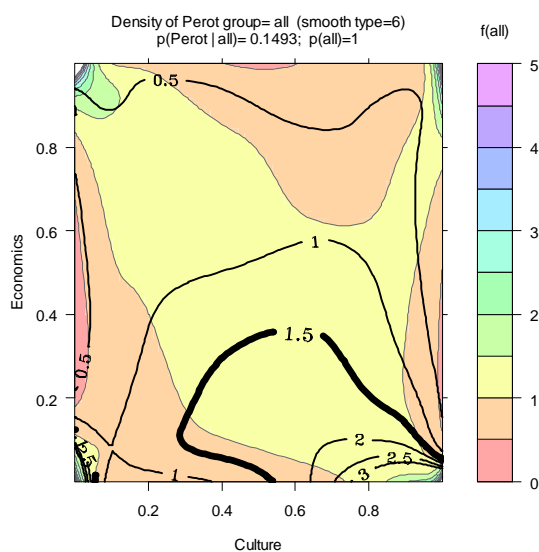
Figure 19

Non-Major-Party Candidates and the Vote: The Nation as a Whole, 1992, 1996, 2000

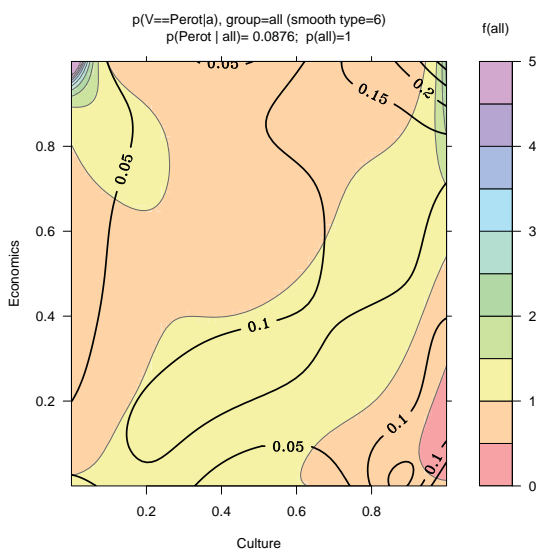
A. The Perot Vote & the Ideological Landscape, 1992



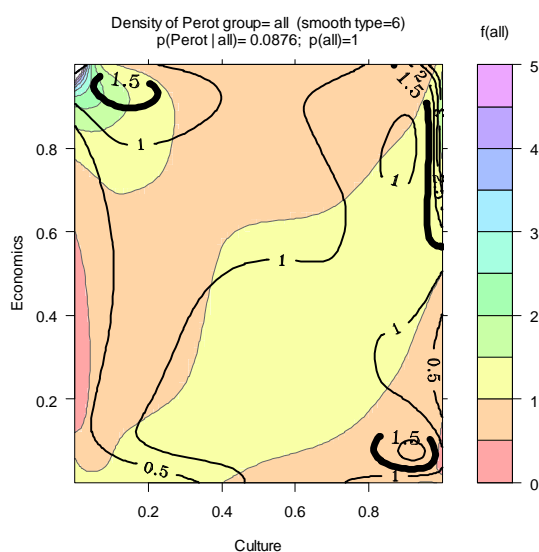
B. Ideological Density & the Perot Vote, 1992



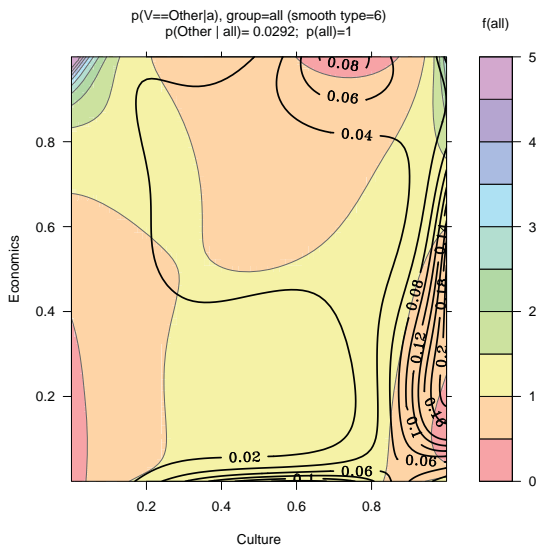
C. The Perot Vote & the Ideological Landscape, 1996



D. Ideological Density & the Perot Vote, 1996



E. The “Other” Vote & the Ideological Landscape, 2000



F. Ideological Density & the “Other” Vote, 2000

